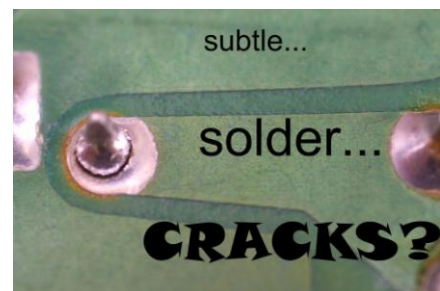


Your volt meter only tells you...



HALF THE STORY!



Enter the **DropLink PowerProbe!** It makes these tests quick, easy, and fool proof. Connect it to a ground circuit and the **DropLink** will display the available voltage.

Press the button to create an actual circuit load for a **REAL** current test!



DropLink Specifications

Voltage DC	Maximum Reading: 36 V Accuracy: $\pm 2\%$ Maximum Resolution: 100 mV
Current DC	Maximum Amps: 30 A Amps Accuracy: $\pm 5\%$ Maximum Resolution: 100 mA
Relative Humidity	Maximum: 0-90%
Size	Length: 230 mm Width: 32 mm Thickness: 22 mm
Lead Length	Ground Lead: 900 mm
Weight	Weight (device only): 100 g
Temperature	Operating: -20 to +40C Storage: -20 to +55C
Altitude	Operating: 2000 m Storage: 10,000 m
Absolute Maximum	Maximum Voltage: 50 V Reverse Hookup: 5 seconds AC Voltage: 500 mV

Please note: specifications are subject to change at anytime without notice.

Designed for use on **12 and 24 Volt DC systems only**.
Use on other systems, or beyond the Absolute Maximum Limits
may damage the DropLink and is not covered by the warranty.

US and International patents pending

MADE IN USA



For Info and Ordering: Go to www.BlueLinkDiag.com or call us at 919.381.2700